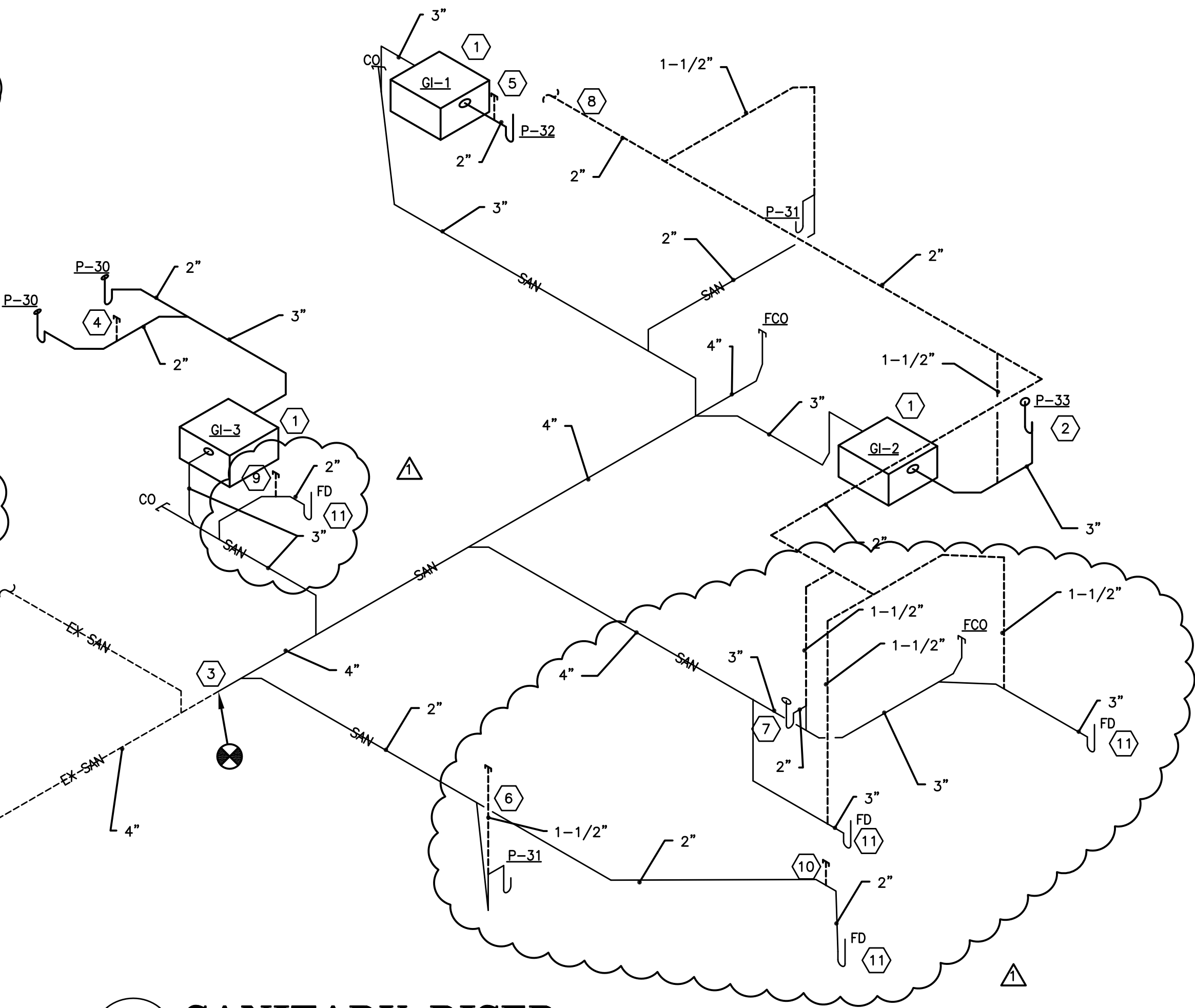


- ### KEYNOTES
- POINT OF USE GREASE INTERCEPTOR TO BE FLOOR MOUNTED. ALLOW 12" MINIMUM CLEAR FOR ACCESS ABOVE COVER. PROVIDE OPEN HUB DRAIN ABOVE FLOOR FOR INDIRECT CONNECTION.
  - RAISE CAN WASH ONLY AS MUCH AS NECESSARY TO ALLOW TRAPPED WASTE TO CONNECT INTO INTERCEPTOR INLET.
  - TIE NEW SANITARY LINE INTO EXISTING 4" CLEANOUT HERE.
  - PROVIDE 1-1/2" STUDOR VENT FOR PREP SINK DRAINS IN WALL. PROVIDE ACCESS GRILLE.
  - PROVIDE 1-1/2" STUDOR VENT UNDER SINK FOR 3 COMP DRAIN.
  - PROVIDE 1-1/2" STUDOR VENT FOR HAND SINK WITH WALL ACCESS GRILLE ON KITCHEN SIDE OF WALL.
  - PROVIDE 2" TRAPPED OPEN HUB DRAIN ABOVE FLOOR FOR ICE MACHINE.
  - CONNECT NEW 2" VENT INTO EXISTING VENT FIELD LOCATE.
  - PROVIDE 1-1/2" STUDOR VENT UNDER TABLE FOR FLOOR DRAIN.
  - PROVIDE 1-1/2" STUDOR VENT FOR FLOOR DRAIN IN WALL. PROVIDE ACCESS GRILLE.
  - INSULATE ALL FLOOR DRAIN TRAPS THAT ARE BELOW FLOOR AND EXPOSED TO FREEZING TEMPERATURES.



### PLUMBING FIXTURE SCHEDULE

FIXTURE TAG	FIXTURE TYPE	DESCRIPTION	SERVICE CONNECTIONS (in)				NOTES
			SAN	VENT	HW	CW	
P-10		DELETED					
P-20		DELETED					
P-30	SINK - KITCHEN PREP	SINK SHALL BE SELECT STAINLESS MODEL PL-8-804-R024 PRODUCTION LINE ONE COMPARTMENT SINK WITH 24\"	2	1 1/2	1 1/2	1 1/2	INDIRECT WASTE TO FLOOR MOUNTED GREASE INTERCEPTOR BY OPEN HUB DRAIN ABOVE FLOOR.
P-31	SINK - KITCHEN HAND SINK	SINK SHALL BE SELECT STAINLESS MODEL PL-8-804-R024 PRODUCTION LINE ONE COMPARTMENT SINK WITH 24\"	2	1 1/2	1 1/2	1 1/2	INDIRECT WASTE TO FLOOR MOUNTED GREASE INTERCEPTOR BY OPEN HUB DRAIN ABOVE FLOOR.
P-32	SINK-3 COMPARTMENT	3-COMP PARTMENT SINK SHALL BE SELECT STAINLESS MODEL PL-8-804-R024 PRODUCTION LINE SINK WITH 24\"	2	1 1/2	1 1/2	1 1/2	INDIRECT WASTE TO FLOOR MOUNTED GREASE INTERCEPTOR BY OPEN HUB DRAIN ABOVE FLOOR.
P-33	CAN WASH	SINK SHALL BE FWT MODEL SB-3006-30\"	3	1 1/2	1 1/2	1 1/2	WASTE TO GREASE INTERCEPTOR. RAISE CAN WASH TO FACILITATE TRAPPED DRAIN CONNECTION TO INTERCEPTOR.
P-34	DUMP STATION	DUMP STATION SINK SHALL BE KROHNE MODEL KR-8-NBD, 17\"	3	1 1/2	1 1/2	1 1/2	INDIRECT WASTE TO FLOOR DRAIN.
ICE	ICE MACHINE BOX	ICE MACHINE BOX SHALL BE EQUAL TO GUY GRAY MODEL BM-875					

### INTERCEPTOR SCHEDULE

UNIT NUMBER	DESCRIPTION	INLET/OUTLET SIZE (INCHES)	FLOW RATE (GPM)	CAPACITY (GALL)		SELECTION BASED ON		REMARKS
				WATER	GREASE (LBS)	MANUFACTURER	MODEL NUMBER	
GH-1	GREASE INTERCEPTOR	3	35	30	70	ZURN	Z110-700	3-COMP SINK ABOVE FLOOR
GH-2	GREASE INTERCEPTOR	3	15	10	30	ZURN	Z110-400	CAN WASH ABOVE FLOOR
GH-3	GREASE INTERCEPTOR	3	20	15	40	ZURN	Z110-500	PREP SINKS ABOVE FLOOR

### ELECTRIC WATER HEATER SCHEDULE

UNIT TAG	CAPACITY (GPH)	RECOVERY (HR)	HEATING ELEMENTS (NO.)	WV (IN)	V (PH)	MANUFACTURER	MODEL	NOTES
WH-1	80	109	6	4.0	208	A.G. SMITH	EW-80-24	1

NOTES:  
1. PROVIDE THERMAL EXPANSION TANK. SEE SCHEDULE.

#### 3 COMP INTERCEPTOR SIZING

ENTER MEASUREMENTS FOR SINK #1 (INCHES): LENGTH [ ] WIDTH [ ] DEPTH [ ] NUMBER OF COMPARTMENTS [ ]

ENTER MEASUREMENTS FOR SINK #2 (INCHES): LENGTH [ ] WIDTH [ ] DEPTH [ ] NUMBER OF COMPARTMENTS [ ]

ENTER MEASUREMENTS FOR SINK #3 (INCHES): LENGTH [ ] WIDTH [ ] DEPTH [ ] NUMBER OF COMPARTMENTS [ ]

ENTER TOTAL GPM FLOW OF ALL OTHER SOURCES FEEDING INTERCEPTOR [ ]

DRAIN GREASE INTERCEPTOR SIZE PER PER METHOD (CONSUMER SINK DRAIN TIME) SEE MODEL: Z110, Z110

DRAIN GREASE INTERCEPTOR SIZE PER PER METHOD (PRODUCTION LINE SINK DRAIN TIME) SEE MODEL: Z110, Z110, Z110, Z110, Z110, Z110, Z110, Z110, Z110, Z110

DRAIN GREASE INTERCEPTOR SIZE PER PER METHOD (PRODUCTION LINE SINK DRAIN TIME) SEE MODEL: Z110, Z110, Z110, Z110, Z110, Z110, Z110, Z110, Z110, Z110

#### CAN WASH INTERCEPTOR SIZING

ENTER MEASUREMENTS FOR SINK #1 (INCHES): LENGTH [ ] WIDTH [ ] DEPTH [ ] NUMBER OF COMPARTMENTS [ ]

ENTER MEASUREMENTS FOR SINK #2 (INCHES): LENGTH [ ] WIDTH [ ] DEPTH [ ] NUMBER OF COMPARTMENTS [ ]

ENTER MEASUREMENTS FOR SINK #3 (INCHES): LENGTH [ ] WIDTH [ ] DEPTH [ ] NUMBER OF COMPARTMENTS [ ]

ENTER TOTAL GPM FLOW OF ALL OTHER SOURCES FEEDING INTERCEPTOR [ ]

DRAIN GREASE INTERCEPTOR SIZE PER PER METHOD (CONSUMER SINK DRAIN TIME) SEE MODEL: Z110, Z110, Z110, Z110, Z110, Z110, Z110, Z110, Z110, Z110

DRAIN GREASE INTERCEPTOR SIZE PER PER METHOD (PRODUCTION LINE SINK DRAIN TIME) SEE MODEL: Z110, Z110, Z110, Z110, Z110, Z110, Z110, Z110, Z110, Z110

#### PREP SINKS INTERCEPTOR SIZING

ENTER MEASUREMENTS FOR SINK #1 (INCHES): LENGTH [ ] WIDTH [ ] DEPTH [ ] NUMBER OF COMPARTMENTS [ ]

ENTER MEASUREMENTS FOR SINK #2 (INCHES): LENGTH [ ] WIDTH [ ] DEPTH [ ] NUMBER OF COMPARTMENTS [ ]

ENTER MEASUREMENTS FOR SINK #3 (INCHES): LENGTH [ ] WIDTH [ ] DEPTH [ ] NUMBER OF COMPARTMENTS [ ]

ENTER TOTAL GPM FLOW OF ALL OTHER SOURCES FEEDING INTERCEPTOR [ ]

DRAIN GREASE INTERCEPTOR SIZE PER PER METHOD (CONSUMER SINK DRAIN TIME) SEE MODEL: Z110, Z110, Z110, Z110, Z110, Z110, Z110, Z110, Z110, Z110

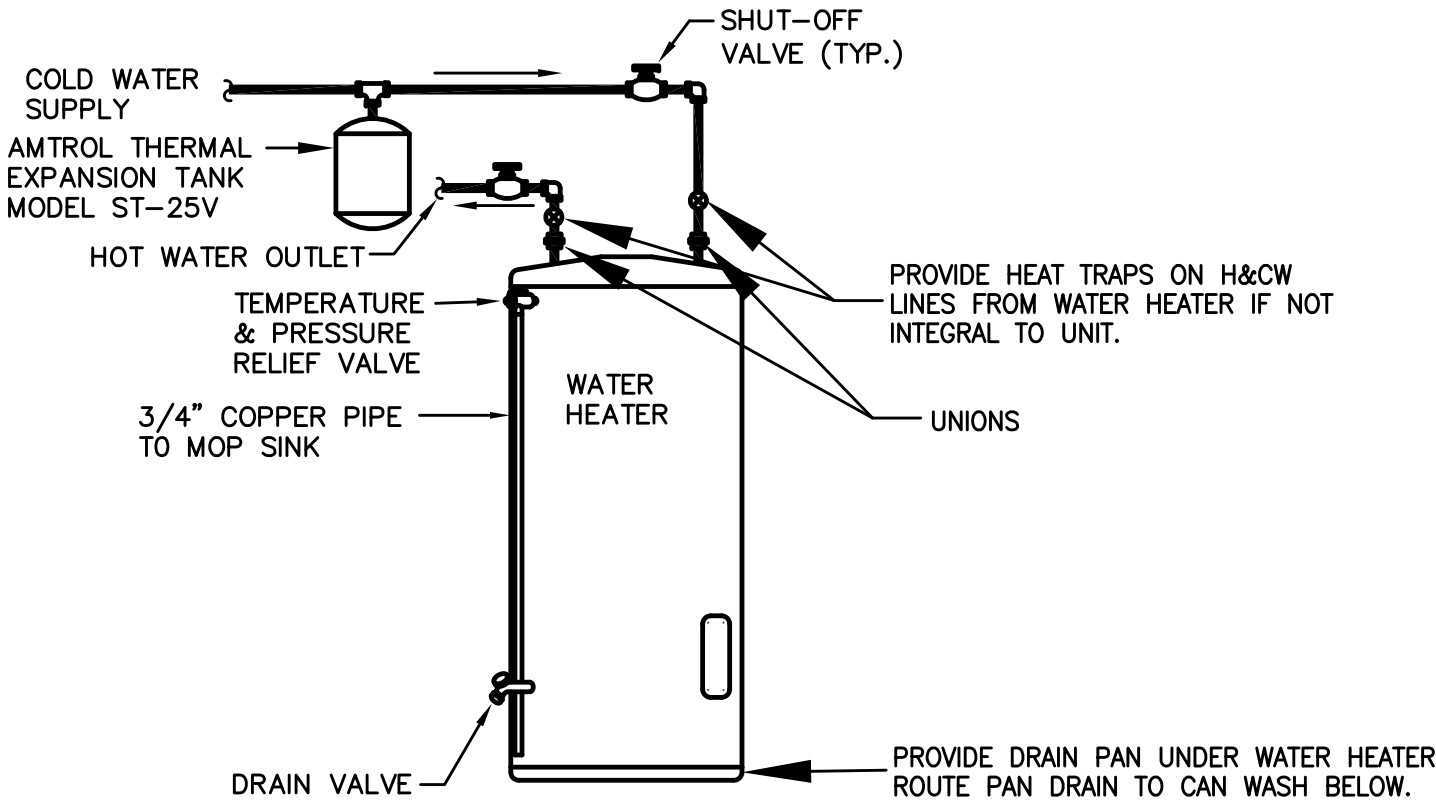
DRAIN GREASE INTERCEPTOR SIZE PER PER METHOD (PRODUCTION LINE SINK DRAIN TIME) SEE MODEL: Z110, Z110, Z110, Z110, Z110, Z110, Z110, Z110, Z110, Z110

### GENERAL PLUMBING NOTES

- ALL WORK SHALL BE PERFORMED IN STRICT COMPLIANCE WITH THE NORTH CAROLINA PLUMBING CODE (LATEST EDITION), ALL LOCAL CODES AND ALL OTHER REGULATIONS GOVERNING WORK OF THIS NATURE.
- THE CONTRACTOR SHALL BE RESPONSIBLE FOR ALL WORK, MATERIALS AND LABOR NECESSARY TO PROVIDE A COMPLETE AND WORKING SYSTEM WHETHER SPECIFIED OR IMPLIED.
- THE CONTRACTOR SHALL SECURE ALL PERMITS OR APPLICATIONS AND SHALL PAY ALL FEES AS REQUIRED.
- THE CONTRACTOR SHALL, BEFORE SUBMITTING ANY PROPOSAL, EXAMINE THE PROPOSED SITE AND SHALL DETERMINE FOR HIMSELF THE CONDITIONS THAT MAY AFFECT THE WORK. NO ALLOWANCE SHALL BE MADE IF THE CONTRACTOR FAILS TO MAKE SUCH EXAMINATIONS.
- WASTE AND VENT PIPING
  - ABOVE GROUND: HUBLESS CAST IRON PIPE & FITTINGS OR DWV COPPER WITH SOLDER JOINTS. NOTE: PVC PIPING SHALL NOT BE USED.
  - BELOW GRADE: SERVICE WEIGHT CAST IRON WITH BELL AND SPIGOT JOINTS WITH RUBBER GASKETS.
- DOMESTIC WATER PIPING
  - ABOVE GROUND: PROVIDE TYPE "L" HARD DRAWN TUBING WITH 125 PSI SOLDER JOINTS, COPPER OR BRASS FITTINGS.
- DRAINAGE PIPING SHALL RUN AS STRAIGHT AS POSSIBLE AND SHALL HAVE NO TURN FITTINGS.
- DRAINAGE PIPING SIZE 2-1/2" AND SMALLER SHALL BE RUN AT A UNIFORM GRADE OF AT LEAST 1/4" PER FOOT, AND PIPING LARGER THAN 2-1/2" SHALL BE RUN AT A GRADE OF NO LESS THAN 1/8" PER FOOT.
- ALL VENT PIPING SHALL BE SLOPED TO DRAIN BACK TO FIXTURES.
- ALL STUB-INS AND/OR SLAB OR WALL PENETRATIONS SHALL BE PER NFPA 20 SEC.2-11.1 AND A.2-11.1. ALL PIPING PENETRATIONS OF BUILDING FOUNDATIONS OR FOOTINGS SHALL BE SLEEVED.
- PLUMBING SYSTEM SHALL BE FLOW AND PRESSURE TESTED IN ACCORDANCE WITH STANDARD PRACTICE AND THE PLUMBING CODE.
- PIPING SUPPORTS (ABOVE GRADE): ALL PIPE SHALL BE SUPPORTED FROM THE BUILDING STRUCTURE IN A NEAT AND WORKMANLIKE MANNER. THE USE OF WIRE AND PREFORMED METAL TO SUPPORT PIPES WILL NOT BE PERMITTED. CAST IRON PIPE SHALL BE SUPPORTED AT LEAST EVERY 5 FEET AND AT EVERY JOINT & FITTING. CAST IRON PIPE BRANCHES WITHOUT SUPPORT SHALL HAVE HANGERS INSTALLED A MAXIMUM OF 4 FEET ON CENTER.
- PIPING SUPPORTS (BELOW GRADE): NA
- CONTRACTOR SHALL BE RESPONSIBLE FOR THE PROPER FLASHING OF THE VENT PIPING RUN THROUGH THE ROOF.
- ALL HOT WATER PIPING SHALL BE INSULATED WITH 1" FIBERGLASS INSULATION. ALL COLD WATER PIPING SHALL BE INSULATED WITH WITH 1/2" FOAM INSULATION.
- CONTRACTOR SHALL PROVIDE STOPS AT ALL FIXTURE CONNECTIONS.
- CONTRACTOR SHALL PROVIDE SURGE ARRESTORS IN ALL SUPPLY BRANCHES WITH QUICK-ACTING VALVES.
- CONTRACTOR SHALL PROVIDE BACKFLOW PREVENTERS AT ALL FIXTURES OR DEVICES, AS NECESSARY.

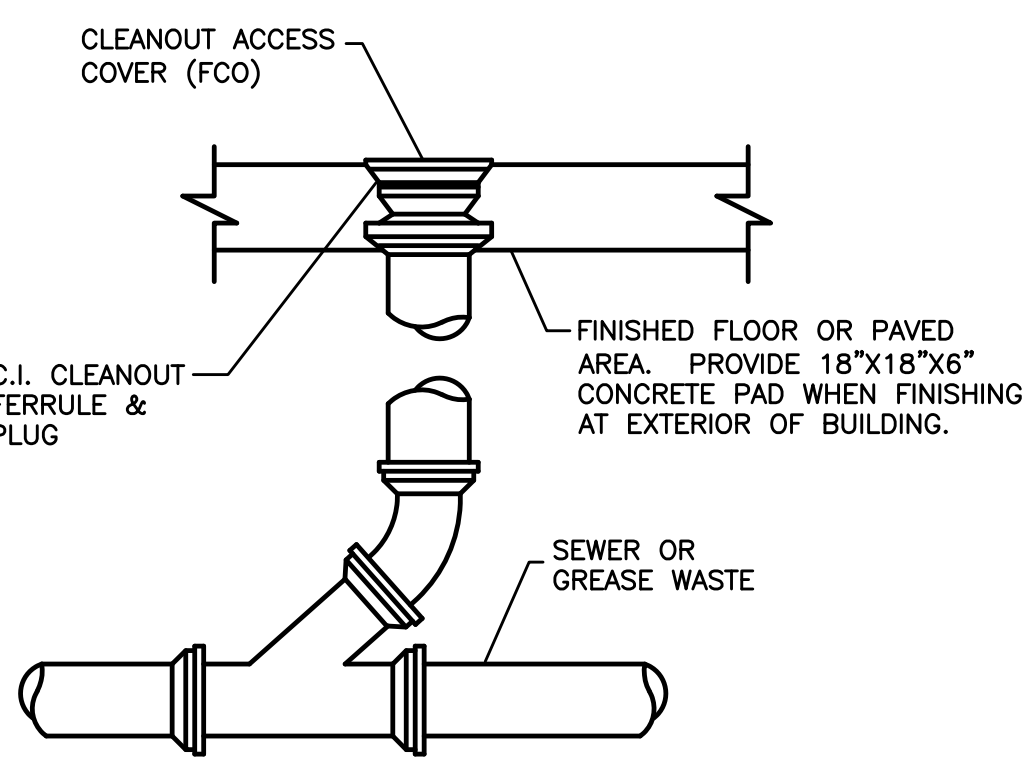
## 1 SANITARY RISER

P2.0 NTS



## 2 WATER HEATER DETAIL

P2.0 NTS



## 3 FLOOR CLEANOUT DETAIL

P2.0 NTS

### Through Penetrations

System No. C-AJ-1292  
March 05, 2007  
F Rating - 3 Hr  
T Rating - 0 Hr  
L Rating At Ambient - Less Than 1 CFM/sq ft  
L Rating At 400 F - 2 CFM/sq ft  
W Rating - Class 1

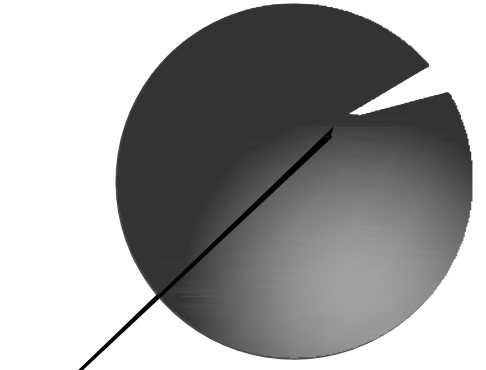
**SECTION A-A**

- Floor or Wall Assembly - Min 4-1/2 in. (114 mm) thick reinforced lightweight or normal weight (100-150 pcf or 1600-2400 kg/m<sup>3</sup>) concrete. Wall may also be constructed of any UL Classified Concrete Blocks\*. Max diam of opening is 6 in. (152 mm). See Concrete Blocks (CAZT) category in the Fire Resistance Directory for names of manufacturers.
- Staves - (Optional) - The following staves may be used:
  - Metallic Stave - Nom 6 in. (152 mm) diam (or smaller) steel Schedule 40 (or heavier) pipe cut or grouted into floor or wall assembly, flush with floor or wall surfaces. As an alternate, nom 6 in. (152 mm) diam (or smaller) sleeve fabricated from nom 0.019 in. (0.48 mm) thick galv steel cut or grouted into floor or wall assembly flush with floor or wall surfaces.
  - Nonmetallic Stave - Nom 6 in. (152 mm) diam (or smaller) Schedule 40 polyvinyl chloride (PVC) pipe cut or grouted into floor or wall assembly, flush with floor or wall surfaces.
- Through Penetrants - One metallic pipe, conduit or tubing installed either concentrically or eccentrically within the firestop system. The smaller space shall be min 1/2 in. (13 mm) to max 2-3/8 in. (60 mm) Pipe, conduit or tubing to be rigidly supported on both sides of floor or wall assembly. The following types of pipe, conduit or tubing may be used:
  - Steel Pipe - Nom 4 in. (102 mm) diam (or smaller) Schedule 10 (or heavier) steel pipe.
  - Conduit - Nom 4 in. (102 mm) diam (or smaller) steel electrical metallic tubing (EMT) or steel conduit.
  - Copper Tubing - Nom 3 in. (76 mm) diam (or smaller) Type M (or heavier) copper tubing.
  - Iron Pipe - Nom 4 in. (102 mm) diam (or smaller) cast or ductile iron pipe.
- Firestop System - The firestop system shall consist of the following:
  - Packing Material - Min 3-3/4 in. (95 mm) thickness of min 4 pcf (64 kg/m<sup>3</sup>) mineral wool batt insulation firmly packed into opening as a permanent form so that the width of the wool is compressed at least 50 percent. Packing material to be recessed from top surface of floor or from both surfaces of wall as required to accommodate the required thickness of fill material.
  - Fire Seal or Cast-in-Place Material\* - Sealant - Min 1/4 in. (6 mm) thickness of sealant applied within the annulus, flush with the top surface of floor or with both surfaces of wall.  
JM COMPANY - FB-1000 NS, FB-1003SL or FB-3000 WT

\*Bearing the UL Classification Mark

This material was extracted and drawn by 3M Fire Protection Products from the 2007 edition of the UL Fire Resistance Directory. Product Support Line: 1-800-328-1687. Consult your local UL branch office for more information.

54 3M Fire Protection Products www.3m.com/firestop C-AJ-1292 • 1 of 1



**RBA GROUP**  
ARCHITECTURE + INTERIORS  
1900 Abbott Street, Suite 101  
Charlotte, NC 28203  
O: 704.344.9098 F: 704.344.9099

**Signet Engineering**  
Your formula for engineering  
129 W. Trade St.  
Charlotte, NC 28202  
704.336-9917  
License No. C-1000



OCTANE CAFE'  
OVERSTREET MALL  
CHARLOTTE, NC

101 SOUTH TRYON ST  
SUITE 1  
CHARLOTTE, NC 28202

REVISION	DATE
1	7.1.09

DRAWN BY: RSM  
CHECKED BY: RSM  
CONTRACT DATE: 5.15.09  
PROJECT NUMBER:

PLUMBING SCHEDULES & DETAILS

P2.0